



Wild Re-Creation®  
[www.arcadiareptile.com](http://www.arcadiareptile.com)

# ProT5™ & ShadeDweller®

## UVB Kit



## KEEP THESE INSTRUCTIONS FOR FUTURE REFERENCE.

## READ AND FOLLOW ALL SAFETY INSTRUCTIONS.

**DANGER** - To avoid possible electric shock, special care should be taken if water is employed in the use of vivarium equipment. For each of the following situations, do not attempt repairs yourself; return the appliance to an authorised service facility or discard the appliance.

This product is designed for indoor use and the illumination of Vivariums and Aviaries only and will provide a good and safe service life, provided that these instructions are followed. Failure to do so may result in serious personal injury or property damage.

If you are in any doubt about the installation or operation of this product, please consult a qualified and experienced electrician.

Check that the voltage and frequency rating on the product label is the same as your electrical supply before proceeding further.

**WARNING**- To guard against injury, basic safety precautions should be observed, including the following:

- Disconnect from the mains supply socket before maintaining the Luminaire. Never pull on the cord to remove the plug from the socket, instead grasp the plug and pull to disconnect.
- The Luminaire can get HOT. Never touch the Luminaire while it is operating, allow adequate time for it to cool before attempting any maintenance.
- This luminaire is rated IP20 NOT water-proof so do not use above or around water.
- If electrical components of the appliance get wet unplug the appliance immediately. If the appliance shows any sign of water leakage disconnect from the power supply immediately.
- Do not operate the Luminaire with defective or faulty lamps – circuit damage may occur. Replace lamps promptly with a lamp of the correct type and wattage. It is advisable to keep spare lamps available.
- Do not use the appliance other than for its intended use. The use of non-Arcadia attachment or accessories is not recommended and may cause an unsafe condition.
- Do not install or store the appliance where it will be exposed to extremes of weather or temperatures below freezing.



Class II Luminaire.  
Double insulated.



Do not look directly at  
light source.

## PHYSICAL INSTALLATION

Select a suitable site close to your electricity supply. Do not connect appliance to the mains supply socket during installation. For maximum fixture life always attach power cords to fixture before plugging into the wall. Ensure the unit is switched off before the lamp is installed. This appliance is for indoor use only. Ensure the appliance is kept in a ventilated area and away from other heat sources. Make sure that the light from the appliance is aimed within the vivarium.

Place the luminaire in the desired position either on top of the Vivarium mesh or screwed to the top of the Vivarium (2 screws not supplied).

Ensure the mains lead and the luminaire are kept well out of reach of animals that might bite or damage them.

## ELECTRICAL INSTALLATION

Before installing, ensure that the rated voltage and frequency of the Luminaire match that of your power supply, and that the mains lead plug is fully compatible with your mains supply socket. If in doubt, please return the unit to the point of purchase for verification.

Plug the luminaire into the mains socket.

A suitable plug in timer may be used with this product, such as the RCAA01.

## TROUBLE SHOOTING

Lamps strike almost immediately at nearly full brightness (dependant on ambient temperature) and reach their operating temperature soon after. After switching the fluorescent lamps off, they can be switched on straight away.

If the Luminaire does not light:

- Check that the mains power is connected and switched on both at the wall (including Timer if used) and on the Luminaire.
- Check that the Luminaire plug is properly fused.
- Check that the Luminaire is rated for the same supply voltage that you are using.
- Check that the Lamps are of the correct wattage, type and length for the Luminaire.
- Check that the lamps are installed correctly.

## MAINTENANCE

**Cleaning:** Disconnect from the power supply and wait till the Luminaire is cool before cleaning, this not only avoids smears but also reduces the likelihood of any damage from moisture entering the Luminaire.

Both the appearance and performance of your Luminaire can benefit from regular cleaning. A damp cloth is normally adequate to clean the body.

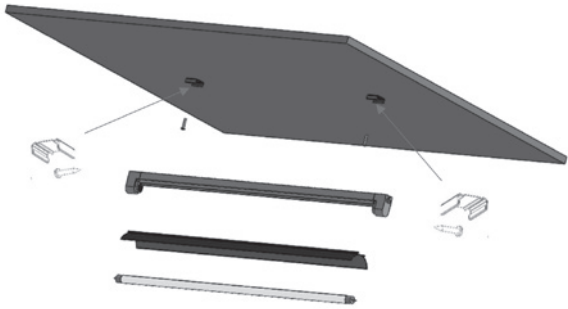
## END OF USE RECYCLING INFORMATION

This product is covered by European Directive 2002/96/EC. Please do not dispose of this product or replacement lamps with your normal household waste. To safely and responsibly dispose of the product please ensure all the components are deposited in the appropriate areas of your local civic recycling centre. Proper disposal of this product helps to prevent potential negative consequences for the environment and human health.

All electronic components (this includes the power supply and the lamp holder) should be placed in the electronic waste recycling area.

If a fluorescent lamp is provided with this product it contains mercury, and cannot be disposed of with normal household waste; it should be deposited in the fluorescent lamp recycling area at your local civic recycling centre or taken to any approved recycling point for fluorescent lamps.

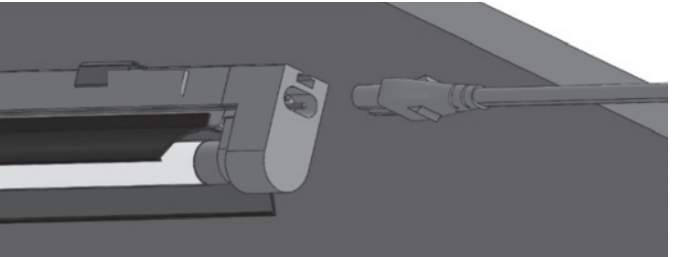
## Vivarium Hood - Mounting



## IMPORTANT

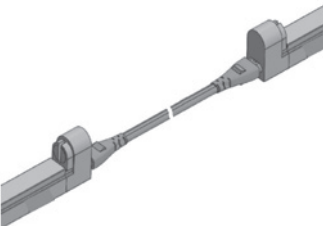
Ensure the unit is switched off before installing the lamp.

## Mains Cable

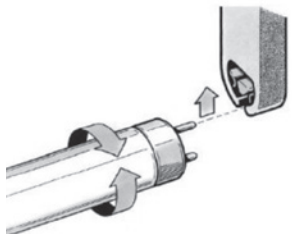


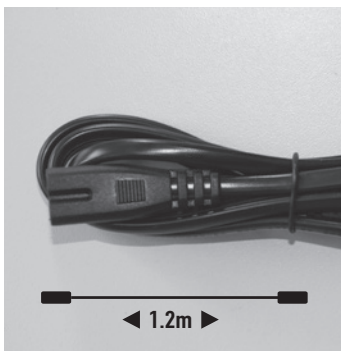
For maximum fixture life always attach power cords to fixture before plugging into the wall.

## Linking Cable



## Lamp Installation





**ProT5**  
UVB Kit



**UK**

### **Link Cable / ProT5**

The link cable will allow for up to 10 light units from one power source, including the Jungle Dawn LED BAR kit.

**FR**

### **Câble de liaison / ProT5**

Le câble de liaison permet d'alimenter jusqu'à 10 unités lumineuses à partir d'une seule source d'alimentation, y compris le kit Jungle Dawn LED BAR.

**ES**

### **Cable de enlace / ProT5**

El cable de enlace permitirá hasta 10 unidades de luz de una fuente de alimentación, incluido el kit Jungle Dawn LED BAR.

**DE**

### **Link-Kabel / ProT5**

Das Verbindungskabel ermöglicht bis zu 10 Lichteinheiten von einer Stromquelle, einschließlich des Jungle Dawn LED BAR-Kits.

**IT**

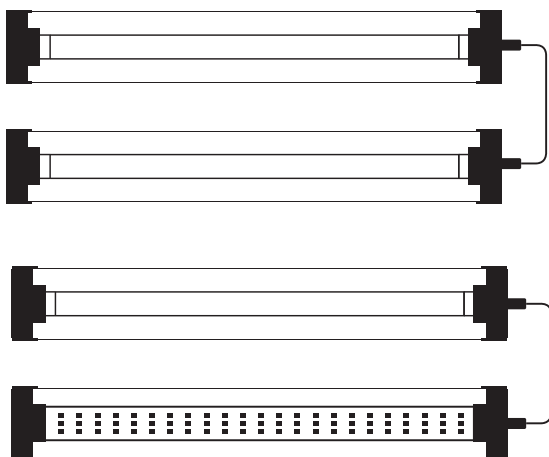
### **Cavo di collegamento / ProT5**

Il cavo di collegamento consente di collegare fino a 10 unità di illuminazione da un'unica fonte di alimentazione, incluso il kit Jungle Dawn LED BAR.

**NL**

### **Verbindingskabel / ProT5**

De verbindingskabel staat maximaal 10 lichteenheden vanaf één voedingsbron toe, inclusief de Jungle Dawn LED BAR-set.



**Jungle Dawn LED BAR**



LampGuardPro		ProT5		
RALGP1	510mm / 20"	RARTP8S/ RARTP8SA	315mm / 12.5"	8W
RALGP2	660mm / 26"	RARTP14S/ RARTP24	570mm / 22.5"	14W/24W
RALGP4	960mm / 38"	RARTP39	870mm / 34"	39W
RALGP5	1260mm / 50"	RARTP54	1170mm / 46"	54W

## SAFETY / SICHERHEIT / SÛRETÉ / SICUREZZA / SEGURIDAD / VEILIGHEID

**UK**  
Protects animals. Protects lamps.  
Allows as much light as possible to travel into the vivarium.

**FR**  
Protège les animaux. Protège lampes.  
Permet à autant de lumière que possible de voyager dans le vivarium.

**ES**  
Protege a los animales. Lámparas de protección.  
Permite que la mayor cantidad de luz posible penetre en el vivero.

**DE**  
Schützt Tiere. Schützt Lampen.  
Ermöglicht es, dass so viel Licht wie möglich in das Terrarium gelangt.

**IT**  
Protegge gli animali. Protegge le lampade.  
Consente l'adeguata illuminazione del terrario.

**NL**  
Beschermt dieren. Bescherm lampen.  
Maakt het mogelijk om zoveel mogelijk licht in het vivarium te laten stromen.

**Minimum distance**

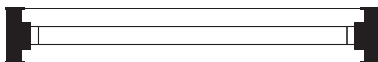
**Distance minimale**

**Mindestabstand**

**Distanza minima**

**Distancia minima**

**Minimale afstand**



RARTP8S	8W	250mm / 10"
RARTP8SA	8W	75mm / 3"
RARTP14S	14W	100mm / 4"
RARTP24	24W	250mm / 10"
RARTP39	39W	
RARTP54	54W	





Country	Watt	Dragon	Desert	Forest	Bird
		14% UV-B	12% UV-B	6% UV-B	2.4% UV-B
UK	24W	RARTP24D	RARTP24R	RARTP24F	-
	39W	RARTP39D	RARTP39R	RARTP39F	-
	54W	RARTP54D	RARTP54R	RARTP54F	CARTP54B
EU	24W	RARTP24XD	RARTP24XR	RARTP24XF	-
	39W	RARTP39XD	RARTP39XR	RARTP39XF	-
	54W	RARTP54XD	RARTP54XR	RARTP54XF	CARTP54XB
US	24W	RARTP24ZD	RARTP24ZR	RARTP24ZF	-
	39W	RARTP39ZD	RARTP39ZR	RARTP39ZF	-
	54W	RARTP54ZD	RARTP54ZR	RARTP54ZF	CARTP54ZB
AU	24W	RARTP24YD	RARTP24YR	RARTP24YF	-
	39W	RARTP39YD	RARTP39YR	RARTP39YF	-
	54W	RARTP54YD	RARTP54YR	RARTP54YF	CARTP54YB

Country	Watt	ShadeDweller	SD Arboreal	ShadeDweller Max
		7% UV-B	2.4% UV-B	2.5% UV-B
UK	8W	RARTP8S	RARTP8SA	-
	14W	-	-	RARTP14S
EU	8W	RARTP8SX	RARTP8SAX	-
	14W	-	-	RARTP14SX
US	8W	RARTP8SZ	RARTP8SAZ	-
	14W	-	-	RARTP14SZ
AU	8W	RARTP8SY	RARTP8SAY	-
	14W	-	-	RARTP14SY

Length	315mm 12.5"	570mm 22.5"	570mm 22.5"	870mm 34"	1170mm 46"
Watt	8W	14W	24W	39W	54W
kWh/1000h	9	16	26	44	60

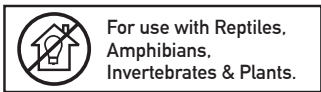
**IP20** UK/EU/AU 220-240V 50Hz  
US/CAN 110-120V 60Hz



Monkfield Nutrition Ltd,  
Arthur Rickwood Farm, Chatteris Road,  
Mepal, Ely, Cambs CB6 2AZ. United Kingdom

[info@arcadia-reptile.com](mailto:info@arcadia-reptile.com)  
[www.arcadiareptile.com/lighting](http://www.arcadiareptile.com/lighting)  
[www.facebook.com/arcadiareptile](https://www.facebook.com/arcadiareptile)

**JBR001**



✓ **RoHS IP20**

